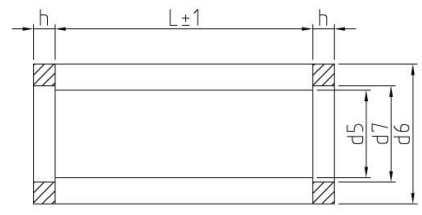
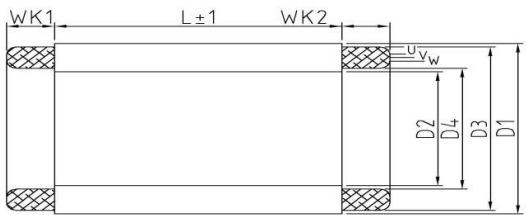


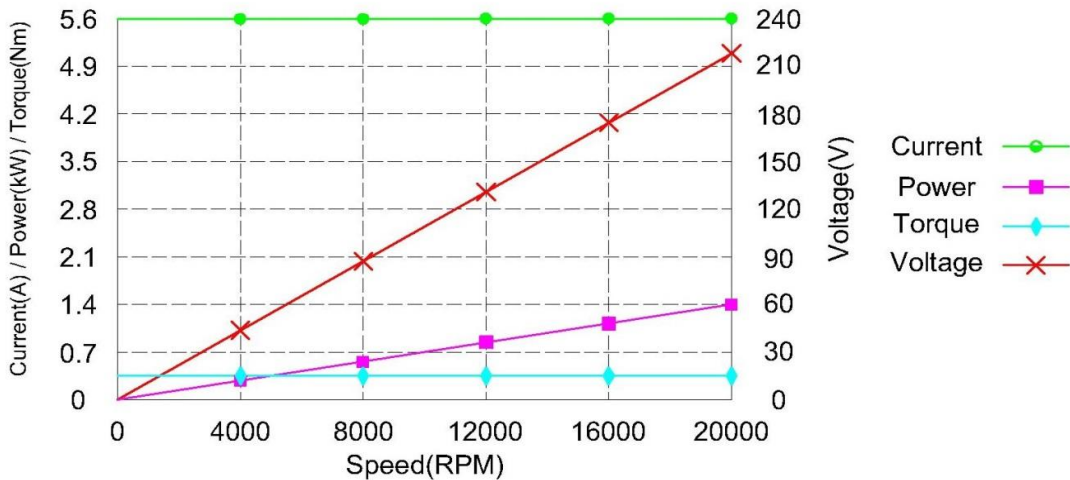
AC ■ 220V	Stator						Rotor				
Insulation Class:											
■ F /Winding (155°C)											
■ F / Cable (155°C)											
Lead Wire: 600 mm length											
U*1 (Brown)											
V*1 (Blue)											
W*1 (Black)											
Sensing:											
■ PTC 130 (blue)											
■ KTY84-130 (black/white)											
	D1	D2	D3	D4	WK1	WK2	d5	d6	d7	h	L
Unmachined (mm)	60	35	58	36	18	20	15	35	16	5	60
Final (mm)	59.9	-	-	-	-	-	20	34.4	-	4	-



	Power	Speed	Voltage	I	Freq	T	Cooling
Specification	kW	RPM	Vrms	Arms	Hz	Nm	water
AC 60/60/2	0.70	10,000	220	2.8	167	0.411	water
AC 60/60/2	1.42	20,000	220	5.6	334	0.411	water
AC 60/60/2	2.20	30,000	220	8.8	500	0.43	water
AC 60/60/2	3.00	40,000	220	12	666	0.44	water
AC 60/60/2	3.80	50,000	220	15.2	834	0.44	water
AC 60/60/2	4.60	60,000	220	18.4	1,000	0.45	water

Application: Turning Drilling Grinding Lathe Milling Cutting Injection Laser Welding
Metal Forming Tapping Sawing Machining Centers Others : Special Purpose Machines

Optional Spec. Compound / Black Colour
 Machined Rotor & Stator Unit, based on client's confirmation



AC 60/60/2 220V 20,000 RPM